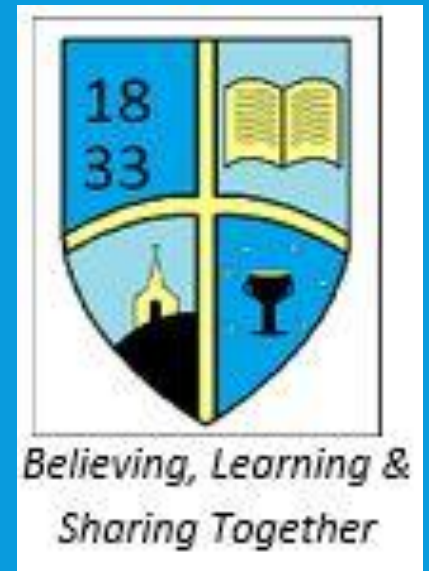


# MEET THE TEACHER

## CLASS 1



MR BIRCHALL,  
MISS PORTER –BROWN  
AND MRS HOLROYD



# WELCOME TO OUR CLASS



*Believing, Learning &  
Sharing Together*

## Classroom procedures:

- Rules and Routines
- Rewards and Sanctions
- Growth Mindset
- Reading Books
- Homework
- Marking & Feedback
- Clubs and Activities
- School Website
- Questions



# GROWTH MINDSET



Believing, Learning &  
Sharing Together

<https://www.youtube.com/watch?v=M1CHPnZfFmU>

**10 Growth Mindset Statements**

**FIXED MINDSET** **GROWTH MINDSET**

What can I say to myself?

INSTEAD OF: TRY THINKING:

I'm not good at this.  
I'm awesome at this.  
I give up.  
This is too hard.  
I can't make this any better.  
I just can't do Math.  
I made a mistake.  
She's so smart. I will never be that smart.  
It's good enough.  
Plan "A" didn't work.

- 1 What am I missing?
- 2 I'm on the right track.
- 3 I'll use some of the strategies we've learned.
- 4 This may take some time and effort.
- 5 I can always improve so I'll keep trying.
- 6 I'm going to train my brain in Math.
- 7 Mistakes help me to learn better.
- 8 I'm going to figure out how she does it.
- 9 Is it really my best work?
- 10 Good thing the alphabet has 25 more letters!

(Original source unknown) @sylviaaduckworth

# TIMETABLE

Class 1 Timetable 2025

Day	8:45	8:50-10:00	10:00-10:30		10:45-11:45		12:45-1:20	1:20-2:40	2:50-3:15
Monday	Register	Maths	Phonics/ Spelling	playtime	English (CP EYFS)	lunch	Additional Phonics  (UTW EYFS)	Computing/ PSHE	Worship
Tuesday		Maths	Phonics/ Spelling		English (CP EYFS)		Additional Phonics	PE ART	Worship
Wednesday		Maths	Phonics/ Spelling		English (CP EYFS)		Additional Phonics (Drawing Club EYFS*)	RE Music	Worship
Thursday		Maths	Phonics/ Spelling		English (CP EYFS)		Additional Phonics (Drawing Club EYFS)	Science	Worship
Friday		Worship Maths	Maths		Phonics/ Spelling Sentence work		Additional Phonics (Drawing Club EYFS)	PE Geography/ History	Story

- EYFS will have access to continuous provision (CP) throughout the day
- \*Drawing club for EYFS will begin after October half term.

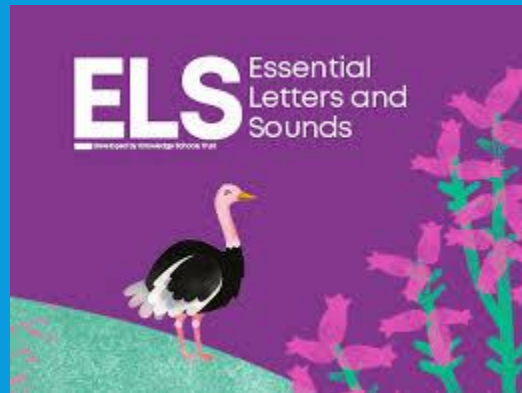
# RULES & ROUTINES



- Before and After School procedures. The gate is open at 8.30.
- If children attend breakfast club they are brought into class by breakfast club staff. Children are taken to after school club by staff at the end of the day.
- Classroom timetable
- PE – on Tuesday and Friday afternoons  
(full kit needed – no jewellery, hair up, pumps/trainers)
- Rewards and sanctions used in class (team points, stickers, spotted board, merits)



# PHONICS

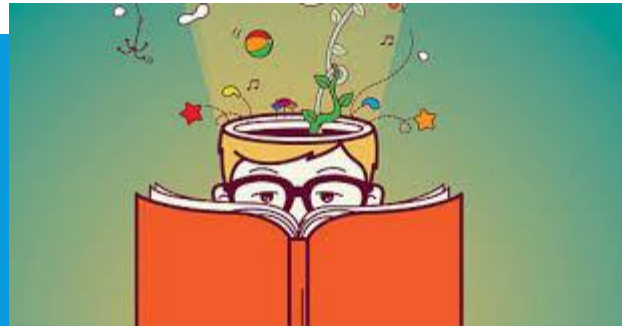


- Phonics is taught daily in a morning to all children in EYFS and Y1. The children in Y1 will also complete an extra 15 minute phonics session each afternoon.

# READING BOOKS AND LIBRARY BOOKS



*Believing, Learning &  
Sharing Together*



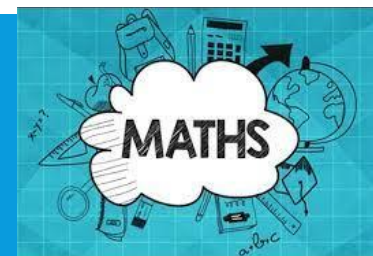
- All home reading books will be sent out on a Friday. Each child will receive 2 or 3 books to read throughout the week.
- **Each book needs to be read 4 times**
- Library books will be changed on a Thursday during the afternoon.



Believing, Learning &  
Sharing Together

## Reception

- Daily reading
- Activities sent home when needed



## Year 1

- Weekly phonics or spelling activities – every Friday
- Weekly number facts or homework related to in class work (e.g. number bonds, times tables) – every Friday
- Parents oversee their children's work and can support it but should not be tempted to complete it for them. If a child struggles with a piece of homework or new reading book, parents or carers can see the class teacher.
- Numbots (Log ins to follow)



# HOMework DATES



*Believing, Learning &  
Sharing Together*

- Homework, will be handed out on a Friday, with it being returned the following Friday. We mark this together as a class so your child can see their own mistakes and begin to learn from these.
- Reading books will be handed out on a Thursday, with them being returned the following Thursday.

# CLUBS & ACTIVITIES



- In house Breakfast club starts at 7:45am, and our After school club finishes at 5:15pm.
- Enrichment after school clubs start straight after school and finish at 4:15pm.
- It is extremely important that all contact details are up to date, including email and mobile phone numbers for all people responsible for collecting pupils from school.

# MARKING & FEEDBACK



*Believing, Learning &  
Sharing Together*

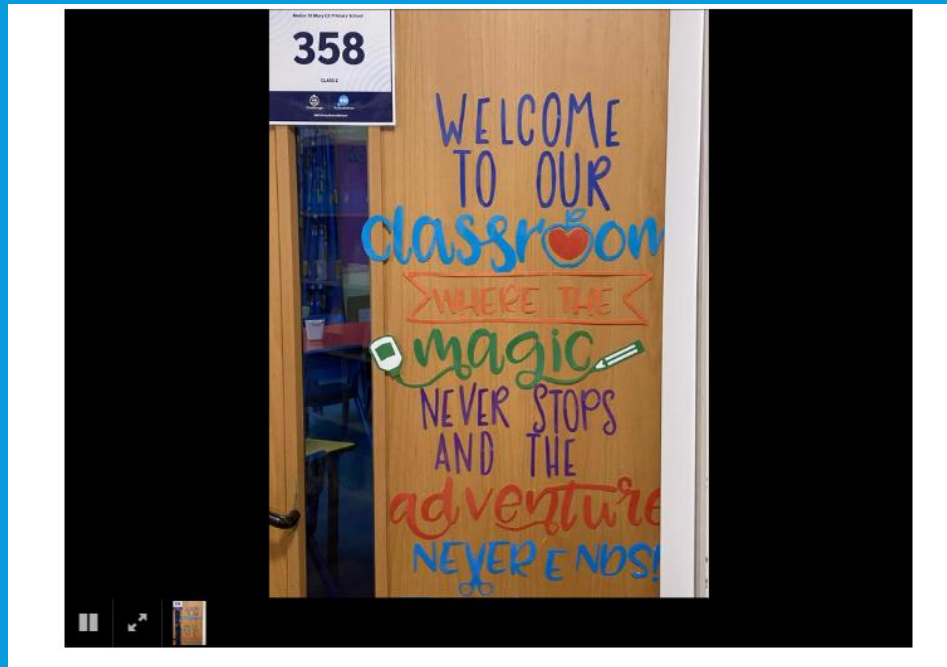
- Written
- Verbal and non- verbal
- Demonstration – could be with individual, group or whole class
- Adapted teaching and learning sequence
- Marking codes

# GENERAL INFORMATION



*Believing, Learning &  
Sharing Together*

- It is extremely important that all contact details are up to date, including email and mobile phone numbers for all people responsible for collecting pupils from school.



# ANY QUESTIONS?



# THANK YOU

# MR BIRCHALL

[ab@mellor.lancs.sch.uk](mailto:ab@mellor.lancs.sch.uk)

